

AC20 Virtual Conference & Expo



CONFERENCE PROGRAM

CWEA
PROTECTING CALIFORNIA'S MOST
CRITICAL RESOURCE

**WORKING WITHOUT DISTRACTION
CAN LEAD YOU TO AMAZING PLACES.**



carollo
Engineers...Working Wonders With Water®

WATER
OUR FOCUS
OUR BUSINESS
OUR PASSION

Imagine if you could focus on a single goal, every day, without distractions. What would you accomplish? Where would it take you? At Carollo, we don't have to imagine. We focus on just one thing—water. Combined with our passion for innovation and technology, that focus has helped us become the largest water-only engineering firm in the country. In fact, for over 85 years we've been providing clients with amazing solutions to their water, wastewater, and reuse issues. And today that journey continues.

1.800.523.5826 | carollo.com



CONTENTS

Sponsors	5
Welcome	7
Virtual Conference Platform	8
Conference App Information	9
Orientation, Icebreaker and New Member Breakfast	11
Opening General Session	13
Schedule at a Glance	14
Virtual Expo	15
Networking Opportunities	16-17
Networking Roundtables	20
Virtual Tours	22
Conference Committee	23
Technical Program	24-33
Registration Instruction	34
Registration Form	35



**REGISTER
YOUR
TEAM**

A virtual event eliminates travel costs, enabling more wastewater professionals to join AC20 than ever before!

See **group discount info** on the registration form.

AC20 BY THE NUMBERS

Total number of sessions live and on-demand: **64**

Total number of CWEA contact hours: **80**

Total number of SWRCB Drinking Water contact hours: **4.6**

Total number of SWRCB Wastewater contact hours: **6.21**

Estimates as of 9/9/20



Sustainable water solutions

Stantec proudly supports the Truckee Meadows with the planning and implementation of innovative technologies that promote sustainable solutions for our community's water and wastewater needs.



Design with community in mind



THANK YOU TO OUR AC20 SPONSORS!

PURE WATER+ LEVEL



PURE WATER LEVEL



TERTIARY LEVEL



SECONDARY LEVEL



SUPPORTING ORGANIZATIONS



A large, dark blue industrial pump unit is the central focus. A glowing blue brain with red neural connections is superimposed on the top of the pump, symbolizing intelligence. A smaller FLYGT logo is visible on the side of the pump. A circular graphic containing the main headline is overlaid on the left side of the pump.

NEW CONCERTOR[®] PUMPING SYSTEM WITH INTEGRATED INTELLIGENCE

WORLD'S FIRST WASTEWATER PUMPING SYSTEM WITH INTEGRATED INTELLIGENCE

This revolutionary system delivers optimal performance while reducing your total cost of ownership. It also offers unparalleled flexibility and simplicity on a whole new level. You might even say it thinks for itself. We invite you to enter a new era in wastewater pumping with Flygt Concertor.

One powerful solution. Unlimited possibilities.

www.xylem.com

xylem
Let's Solve Water

THIS IS WHY

- KEVIN CALDERWOOD, CWEA PAST PRESIDENT
- GARY WARREN, AC20 CO-CHAIR

No doubt this has been a challenging year for many of us, especially those serving in new roles as essential workers. CWEA members typically spend time together at conferences and events talking about *what* we do as wastewater professionals and *how* we do it—and there will be plenty of that at AC20 in our new virtual conference format. This year, with *This Is Why*, we want to give some thought to *why* we do what we do.

People in wastewater are among the smartest, most motivated, most capable people in the world. Our conference theme this year, **This Is Why**, is our way of reminding us to think about why we work so hard, and to celebrate your successes. Just think of all the ways water is used in California. **Without you, none of that is possible.**

Technical Sessions and Featured Tracks

We hope to see more members than ever on our new virtual conference platform. The Program Team has assembled a wide range of technical sessions and training that will cover collection systems, operations and maintenance, advanced treatment technologies, engineering and research, laboratory, State regulations and more.

Thank you to our expert speakers for leading conversations online with AC20 attendees and sharing your knowledge and experience with peers. The majority of presentations this year are “Curated Tracks,” tailored to cover hot-button issues within the sector. Be sure to check them out for deep dives into critical current topics. Session content will be recorded for future access, and depending on the registration option you’ve selected, you can have access to all on-demand content for up to 90 days after the event. The online conference training will be more accessible than ever without the added cost or burdens of traveling.

AC20 Virtual Expo

CWEA’s dynamic virtual conference platform provides a fully interactive Virtual Expo, featuring exhibitors from across California. We’ve included plentiful opportunities for exhibitor and sponsorship networking, all while attendees connect from the comfort and safety of their home or office.

Networking Opportunities

One of the cornerstones of CWEA’s Annual Conference



is networking, allowing attendees to get together to see old friends and make new ones. While we will be unable to gather in person for the foreseeable future, we’re designing AC20 to capitalize on the best of what online delivery affords and building numerous opportunities to safely participate in meaningful collaboration with colleagues near and far.

Join us on the AC virtual platform for:

- Four live channels each day featuring multiple presentation topics and Q&As with speakers
- Daily networking lunches with California’s top wastewater leaders plus small group video chats
- Meet the presenter in small group video chats so you can talk with a speaker
- Chat and video meeting options in the expo to ask questions of the vendors
- Return of the ever-popular Women in Water Networking Lunch on Tuesday, October 20th
- And don’t miss AC20’s line-up of fun competitions with fantastic prizes

See You Online!

It’s going to be an amazing, first of its kind conference. Join 1,000 or more wastewater professionals to help celebrate This Is Why! We hope you can also benefit from the new conference format. Get registered today.

Special thanks to all the volunteers and staff contributing to make this event and online format an amazing success.



Kevin Calderwood

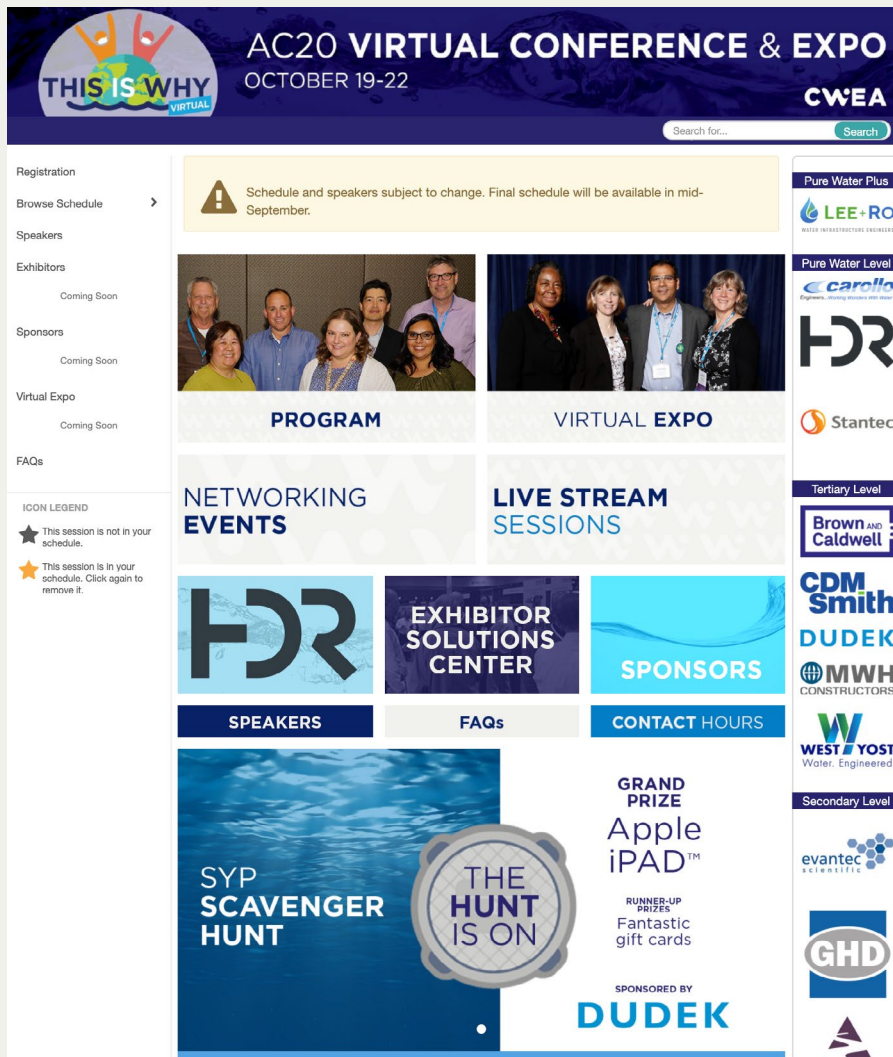
CWEA Past President
HDR



Gary Warren

AC20 Co-Chair
EBMUD

VITURAL CONFERENCE PLATFORM



To maximize collaboration, AC20 will utilize a premier platform that offers an **immersive experience** far more valuable than a standard webinar.

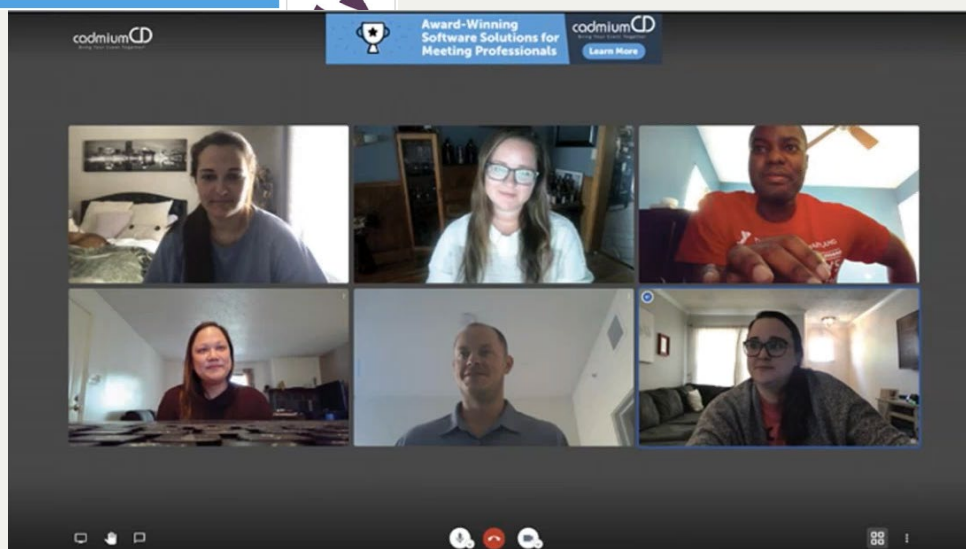
Online delivery affords us flexibility – **watch presentations live or on-demand at any time.**

Freely connect with speakers, vendors and other attendees with direct chat and during video meetings.

Virtual Tech
Sponsored By:



Conference webpage



Video meetings (Cadmium CD)

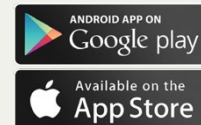
AC20 CONFERENCE APP

THE APP WILL BE AVAILABLE ONE WEEK BEFORE THE CONFERENCE START DATE

By downloading the free conference app to your mobile device or tablet, you will be able to enhance your experience with additional features such as:

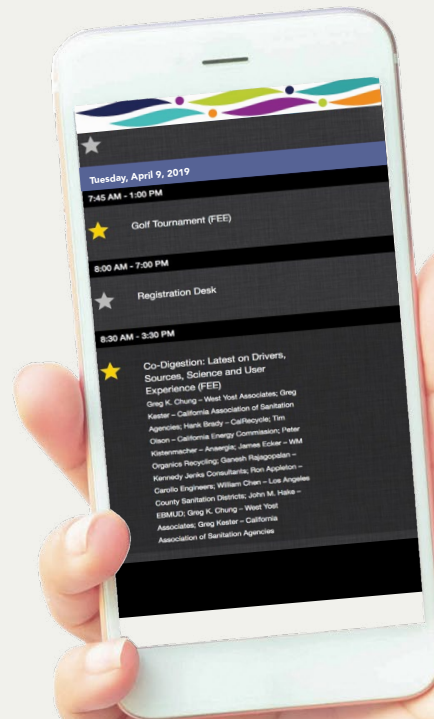
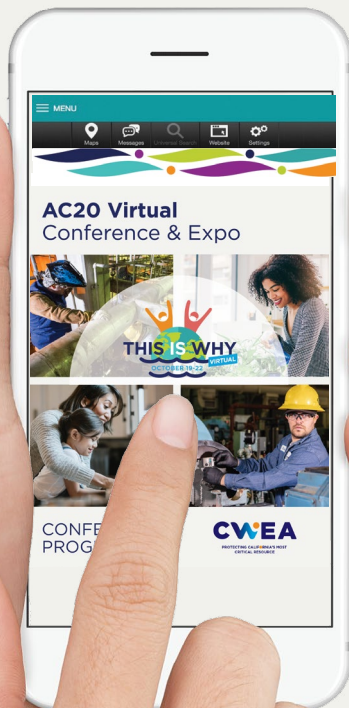
- Connect and network with fellow attendees
- Create your conference schedule by adding it to your personal calendar
- View presenter bios and presentation materials
- Take notes on the presentations
- View exhibitors and add notes to the booths you visit
- Participate in the SYP Scavenger Hunt and win prizes

Sponsored By:



"I ABSOLUTELY LOVED BEING ABLE TO TAKE NOTES WITH THE SLIDES ON THE CONFERENCE APP!"

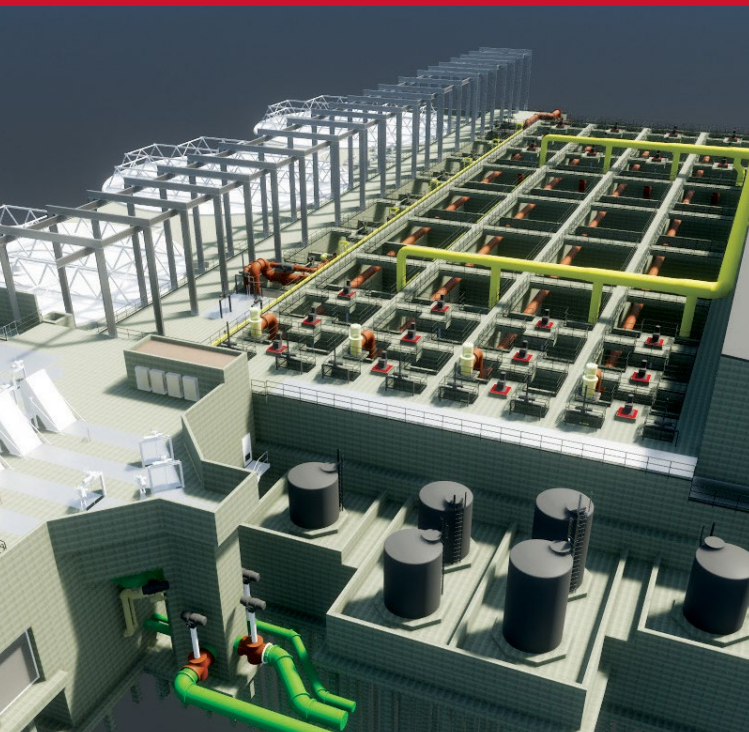
- AC ATTENDEE





Complete Engineering & Consulting Services

Sacramento Regional San, EchoWater Project
San Mateo Wastewater Treatment Plant
Upgrade and Expansion Project



VIRTUAL CONFERENCE ORIENTATION & ICEBREAKER RECEPTION ROUNDTABLES

● **MONDAY, OCTOBER 19,
3:30 P.M. – 5:00 P.M.**

Whether you are new to the field or a seasoned professional, attend this Virtual Conference Orientation to discover how to optimize your online conference experience and chat with fellow attendees, CWEA board members, conference volunteers and CWEA staff.

Identify educational tracks and sessions that will be the most useful to you. Learn how to star the sessions you plan to attend and get your questions answered about the new platform.



NEW MEMBER BREAKFAST

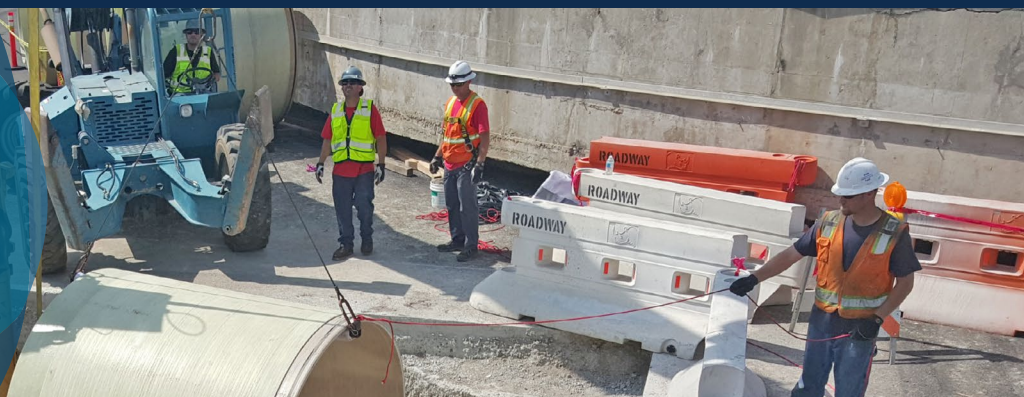
● **TUESDAY, OCTOBER 20, 8:00 A.M. – 9:00 A.M.**

CWEA Staff and board members will be on hand to provide an overview of CWEA's membership benefits.

DUDEK

dudek.com | 800.450.1818 | hello@dudek.com

**YOUR PROJECT.
YOUR SUCCESS.
OUR BUSINESS.**



Dudek's civil engineering, environmental permitting, construction management, and operational experts provide a one-stop solution for any wastewater project challenge:

- Treatment Design
- Collection System Design and Rehabilitation
- GIS-based Master Planning
- Contract Operations Staffing
- Right of Way Management
- Construction Management
- Environmental Permitting

Environmental Analysis

Compliance without Compromise

Streamline your water analysis workflow with our extractors, evaporators and SPE consumables



Ground Water



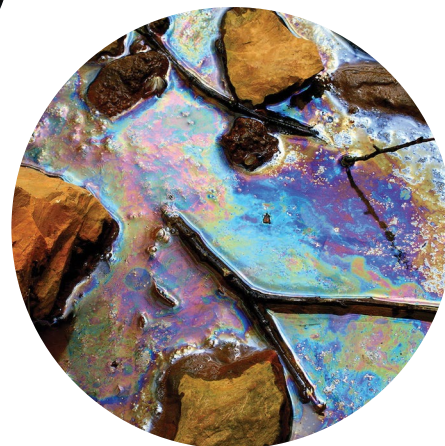
Surface Water



Waste Water



Drinking Water



Oil & Grease

Learn more from the environmental sample prep experts at Biotage, Salem, NH. www.biotage.com



CWEA OPENING GENERAL SESSION

● TUESDAY, OCTOBER 20, 9:30 A.M. - 11:30 A.M.

This is Why: Inspiring Water's Next Generation



Fredi Lajvardi, a nationally recognized STEM educator, will share his amazing story of mentoring a high school engineering club in Phoenix. With Fredi's guidance and inspiration, the students never gave up on their quest to compete at a national underwater robotics competition.

The first competition they entered was a university-level competition at UC Santa Barbara. They went head-to-head with teams from MIT and other colleges.

With humor and passion, Fredi reveals the simple secrets to his national championship winning team. He'll share the same wisdom, spirit of inventiveness, and determination that transformed an improbable group of teenagers from a disadvantaged neighborhood in Phoenix into an unstoppable national powerhouse. His presentation captures the imagination and will spark the creativity in all of us.

Honored with numerous awards for his spirited passion for teaching, Fredi continues to serve as a prominent advocate for STEM education nationwide.



Sponsored by:



Committed to advancing water resources for future generations

West Yost is a proud supporter of CWEA.

We aim to be the water firm of choice for both our clients and team.

We deliver high-value water solutions that support sustainable, livable communities across California.

Our expertise includes:

- Wastewater Treatment
- Biosolids Management and Codigestion
- Collection System Planning
- Wastewater Infrastructure Design
- Asset Management
- Water Recycling
- Regulatory Compliance Support
- Funding/Grants
- Program & Construction Management
- Operations Technology, Cybersecurity and Resilience

WEST YOST
Water. Engineered.
WESTYOST.COM

SCHEDULE AT A GLANCE

MONDAY, OCTOBER 19	
ALL DAY	ON-DEMAND - For a listing of the on-demand sessions, please visit AC.CWEA.org
3:30 - 4:00 p.m.	Virtual Conference Orientation
4:00 - 5:00 p.m.	Icebreaker Reception - Video Roundtables
TUESDAY, OCTOBER 20	
ALL DAY	ON-DEMAND - For a listing of the on-demand sessions, please visit AC.CWEA.org
ALL DAY	Virtual Expo
8:00 - 9:00 a.m.	New Member Breakfast
8:00 - 9:00 a.m.	Yoga 
9:00 - 5:00 p.m.	SYP Scavenger Hunt Sponsored by Dudek
9:30 - 11:30 a.m.	Opening General Session: This is Why: Inspiring Water's Next Generation
11:30 - 1:30 p.m.	Virtual Expo - Live Chat Open
12:00 - 1:15 p.m.	Women Impacting Water Lunch
1:30 - 3:30 p.m.	Afternoon Sessions 
4:00 - 5:00 p.m.	Trivia Roundtables by the SYP Committee
WEDNESDAY, OCTOBER 21	
ALL DAY	ON-DEMAND - For a listing of the on-demand sessions, please visit AC.CWEA.org
ALL DAY	Virtual Expo
8:00 - 9:00 a.m.	Local Section Roundtables 
9:00 - 5:00 p.m.	SYP Scavenger Hunt Sponsored by Dudek
9:30 - 11:30 a.m.	Morning Sessions
11:30 - 1:30 p.m.	Virtual Expo - Live Chat Open
12:00 - 1:15 p.m.	Engineering & Research Lunch: Operation and Management Practices at Central San
1:30 - 3:30 p.m.	Afternoon Sessions
THURSDAY, OCTOBER 22	
ALL DAY	ON-DEMAND - For a listing of the on-demand sessions, please visit AC.CWEA.org
ALL DAY	Virtual Expo
8:00 - 9:00 a.m.	Committee Roundtables
9:30 - 11:30 a.m.	Morning Sessions
11:30 - 1:30 p.m.	Virtual Expo - Live Chat Open
12:00 - 1:15 p.m.	Career Pathways in Water/Wastewater Lunch
1:30 - 3:30 p.m.	Afternoon Sessions
4:00 - 5:00 p.m.	CWEA Annual Business Meeting, Closing Session and Prize Winners Announced
FRIDAY, OCTOBER 23	
ALL DAY	ON-DEMAND - For a listing of the on-demand sessions, please visit AC.CWEA.org

VIRTUAL EXPO

CWEA's **AC20 Virtual Expo** is a powerful online engagement experience for attendees and exhibitors. We have created an interactive digital experience for attendees with an on-demand Virtual Expo that will be available for up to 90 days.

Attendees who visit the Virtual Expo will have the opportunity to discover new products and services, interact with exhibitors via chat, and engage with companies they currently do business with. You'll also be able watch videos, download product information, play games and win prizes.

TUESDAY, OCTOBER 20

11:30 a.m. – 12:00 p.m. Virtual Expo - Live Chat Open

WEDNESDAY, OCTOBER 21

11:30 a.m. – 12:00 p.m. Virtual Expo - Live Chat Open

THURSDAY, OCTOBER 22

11:30 a.m. – 12:00 p.m. Virtual Expo - Live Chat Open



The Virtual Expo will be open for 30 days after AC20. Virtual Expo only passes will be good for 30 days with no access to content.

EXPO EVENTS

● SYP SCAVENGER HUNT OCTOBER 20 - OCTOBER 21

All conference attendees who download the conference app are eligible to participate in this year's Student's and Young Professionals Scavenger Hunt sponsored by **DUDEK**.

Visit participating exhibitors, scan the QR code and answer the questions to win points all on the app. Accumulate over 1,000 points and you'll be entered into a drawing to win the Grand Prize, an Apple iPad. Winners will be announced on October 21.

You do not need to be present to win. All you need to join the fun is a smartphone or tablet and the Eventscribe app. App will be available for download in October.



NETWORKING OPPORTUNITIES

WOMEN IMPACTING WATER LUNCH

● TUESDAY, OCTOBER 20, 12:00 P.M. – 1:15 P.M. ● FREE



Plan for an inspiring morning of networking and discussion with female water leaders, engineers, operators, scientists, and those that support them in the industry. Our goal is to expose attendees to methods for building authentic, genuine, and enduring connections with others in the industry and beyond.



Attendees can expect a panel of dynamic women speakers with very different roles in the industry sharing their unique stories and perspectives in an interactive forum. The focus of this session will be **Expanding Your Network for Success**, including ideas and resources for meaningful expansions of both personal and professional networks.

SPEAKERS: Megan Yoo Schneider, Municipal Water District of Orange County & Eleanor Allen, Water For People

Sponsored by:



Women Impacting Water

We are proud of
our workforce
and the women
who impact water
across the globe.

This is Why...



"This industry is all about teamwork; there's no one person who can do it all by themselves."

Sogol Gremi, PE



"For the first five critical years of my consulting career, I showed persistence, listened to my colleagues and quite literally got my hands dirty. My current role is my dream job, but I have been taking strategic steps over the years to build my career. There are no shortcuts."

Dora Chiang, PhD, PE



"Women play an essential role in the development of sustainable engineering and environmental solutions, and this role should not only be celebrated but advocated for and nurtured throughout generations."

Melissa Harclerode, PhD, Env SP



"My husband and I are both engineers, but when you ask my 9-year old son what he wants to be when he grows up, he'll tell you, 'I want to be an engineer like my mom.'"

Sarah Stewart, PE



cdmsmith.com

listen. think. deliver.

ENGINEERING & RESEARCH LUNCH: OPERATION AND MANAGEMENT PRACTICES AT CENTRAL SAN

● WEDNESDAY, OCTOBER 21, 12:00 P.M. – 1:15 P.M. ● FREE

Director of Engineering and Technical Services, **Jean-Marc Petit** will be presenting Operation and Management Practices at Central Contra Costa Sanitary District (Central San). The discussion will include the Comprehensive Wastewater Master Plan, Strategic Plan, as well as all the major best practice tools Central San is implementing. Learn how Central San maximizes their use of GIS data base to optimize a 1,500 miles sewer maintenance and replacement program, how Central San has implemented a robust Computerized Asset Management System (CMMS), and including how they are managing their 20-year \$1.8 B Capital Improvement Program.

Sponsored by:



CAREER PATHWAYS IN WATER/WASTEWATER LUNCH

● THURSDAY, OCTOBER 22, 11:45 A.M. – 1:15 P.M. ● FREE



This event features a cohort of high school and college-age interns (students) presenting on careers in the industry, as well as a panel of professionals discussing their own “career story” and the roles that are available at their organizations.

Participants will learn about careers in the wastewater industry, while professionals will have the opportunity to promote employment with their organization.

SPEAKERS: **Drew Lehman**, Environmental and Public Infrastructure Careers & **Timeyin Dafeta**, City of LA/LA Sanitation & Environment

BREWERY RESOURCE RECOVERY LUNCH

● THURSDAY, OCTOBER 22, 12:00 P.M. – 1:15 P.M. ● FREE

Charlie Arnold of **Stone Brewing** will describe the brewery’s onsite water treatment system that converts spent brewing water into reusable water to reduce the facility’s resource and carbon footprint. Attendees will learn to identify the treatment technology used by Stone Brewing as well as successes and challenges of the system.



Find full session and speaker info at AC.CWEA.ORG



- ☑ Circumnavigation
- ☑ The horseless carriage
- ☑ Human flight
- ☑ Artificial intelligence
- ☐ Sustainable water infrastructure for California

Everything is impossible. Until it's not.
Celebrating 40 years as partners in possibility.

Los Angeles
Headquarters
1199 South Fullerton Road
City of Industry, CA 91748
626-912-3391

Bay Area
1550 Parkside Drive
Suite 320
Walnut Creek, CA 94596
925-937-4050

Sacramento
8950 Cal Center Drive
Suite 120
Sacramento, CA 95826
916-631-0111

San Diego
10640 Scripps Ranch Blvd.
Suite 150
San Diego, CA 92131
858-558-4411



TRIVIA ROUNDTABLES

● TUESDAY, OCTOBER 20, 4:00 P.M. – 5:00 P.M.

Be prepared to test your knowledge on popular culture, the California wastewater industry and more as the **Students and Young Professionals** host a night of trivia. Win prizes, network with fellow wastewater professionals and have fun!

LOCAL SECTION & COMMITTEE ROUNDTABLES

● WEDNESDAY, OCTOBER 21, 8:00 A.M. – 9:00 A.M.

● THURSDAY, OCTOBER 22, 8:00 A.M. – 9:00 A.M.

Join your Local Section and/or Tech Committee for small group networking and discussion opportunities.

Thinking of water in new ways

Water in all forms is precious. Together, we are helping communities to reimagine the water cycle and create sustainable new supplies for a bright future.



BrownandCaldwell.com



©2020 Brown and Caldwell. All rights reserved.

Water is everyone's business.

From catchment to tap – we make it our business to understand the issues.

GHD is one of the world's leading professional services companies. We operate in the global markets of water, energy and resources, environment, property and buildings, and transportation. We provide engineering, environmental, advisory, digital, and construction services to help our clients create lasting community benefit.

Today, more than 10000 empowered people in 200+ offices on five continents collaborate with our clients and sustain relationships to achieve innovative outcomes across services, markets, and geographies.

www.ghd.com





VIRTUAL TOURS

● TIMES TBD FREE

Marble Bluff Fish Passage Facility

Aiding cutthroat trout's ability to migrate to their spawning habitats about the dam in the Truckee River. The high-tech fish lock can move as many as 2,000 fish in 15 minutes.

Learn about the evolution, population trends, and resurgence of these historic fish species.

Reno-Stead WRF/University of Nevada, Reno IPR Feasibility Study

With the University of Nevada, Reno (UNR), the facility is pilot testing the feasibility of indirect potable reuse (IPR) and groundwater augmentation. Technologies include Coagulation-Flocculation-Clarification Granular Media Filtration (CFC-GMF), Ozone-Biologically Activated Carbon (O3-BAC), and Ultraviolet Disinfection and Effluent Polishing (UV+).

SoL Cannabis Tour SoL

A one-of-a-kind grow facility with a hybrid greenhouse, state-of-the-art commercial kitchen and extraction lab directly connected to a dispensary. Most cannabis is grown using 100% artificial lighting. SoL has been focused on using natural sunlight.

Learn about the day-to-day operations of the facility and the challenges encountered in this field.



Customized Project Delivery
Water & Wastewater Facilities Construction
200-Year Legacy

CONFERENCE COMMITTEE

CWEA PAST PRESIDENT
CONFERENCE CO-CHAIRS

EDUCATION PROGRAM TEAM CHAIR
EDUCATION PROGRAM TEAM MEMBER

ENGAGEMENT AND FUN CHAIR
WOMEN IMPACTING WATER NETWORKING LUNCH CHAIR
OPENING GENERAL SESSION CHAIR
5S CHAIR
EXHIBITS CHAIR
SYP EVENTS OVERALL CHAIR
AWARDS CHAIR

Kevin Calderwood
Monica Myhill
Gary Warren
Kathryn Gies
Chathura Abeyrathna
Howard Brewen
Mike Falk
Dennis Lambert
Linda Leong
Diana Messina
Billy Wong
Laurie Brenner
Doug Wing
Garry Parker
Penny Darlington
Sami Hunkler
Matt Winkelman

HDR
CWEA
EBMUD
West Yost Associates
Central San
Jacobs
HDR
CWEA SF Bay Section
CWEA SF Bay Section
State Water Board
Stantec
Union Sanitary District
Carollo Engineers
San Bernardino Valley College
MISCOWater
LACSD
GHD

CONFERENCE TOTE BAG

Would you like us to mail you an AC20 tote bag? If so, please click [HERE](#) to claim your bag. Tote bags will be shipped on a first come, first served basis. CWEA thanks **STANTEC** for sponsoring the tote bags!



**Your FREE AC20
Gifts Are Here!**



Sponsored by:



TECHNICAL PROGRAM

TUESDAY OCTOBER 20

9:30 - 11:30 a.m.	Opening General Session – This is Why: Inspiring Water’s Next Generation, Fredi Lajvardi		
11:30 - 1:30 p.m.	VIRTUAL EXPO: LIVE CHAT		
12:00 - 1:15 p.m.	VIRTUAL NETWORKING LUNCH: WOMEN IMPACTING WATER		
TRACK NAME	SCADA Implementation from Multiple Perspectives	Emerging Nutrient Removal	Collection System I&I Control Strategies
MODERATOR	Charles Aycock Municipal Automation Services	Michael Walkowiak Brown and Caldwell	Dave Schwartz CDM Smith
PRACTICE AREAS	ALL	ER	CS
SPONSOR			
1:30 – 3:30 p.m.	SCADA Implementation from the Consultant’s Perspective <i>Michael Johnson Jacobs Engineering Group</i>	Membrane Aerated Biofilm Reactors: Full-Scale Implementation and Illustrative Pilots <i>Amit Kaldate, Suez</i>	Effective I&I Reductions Using Adaptive Asset Management Approach <i>Eva Agus East Bay Municipal Utility District</i>
	SCADA Implementation from the Integrator’s Perspective <i>Stephen Goldsworth JEGO Systems</i>	Nutrient Removal Intensification Using MABRs: Pilot Study at Hayward WPCF <i>Sandeep Sathyamoorthy Black & Veatch</i>	I&I Micro Detection: Pinpointing Inflow and Infiltration Simply <i>Matthew Scaglione Duke’s Root Control</i>
	SCADA Implementation from the Owner’s Perspective & Panel Discussion <i>Charles Aycock Municipal Automation Services</i>	Advancements and Considerations for Flow: Through Aerobic Granular Sludge Processes <i>John Fraser, Carollo Engineers</i> Benefits of Converting Conventional Activated Sludge System to Granular Activated Sludge <i>Mark Harris Town of Hillsborough</i>	Seductive Lure of Level-Only Meters for Measuring I&I <i>Jay Boyd ADS Environmental Services</i>

Speakers and moderators of live sessions will be available through the chat and question & answer features during their session. After the session stick around for **Meet the Presenters** to video chat with the speakers. Registered attendees will have access to all sessions on-demand. Recordings of live sessions will be posted 72+ hours after the original session time. These can be accessed for up to 90 days after the conference, depending on your registration type.

The full session must be attended to receive contact hour(s).

Opening General Session	
VIRTUAL EXPO: LIVE CHAT	
VIRTUAL NETWORKING LUNCH: WOMEN IMPACTING WATER	
Good Practices for Plant Improvement Projects	New and Emerging Regulatory Programs
William Schilling West Yost Associates	Kathryn Gies West Yost Associates
OM	ALL
	
Why and How of Improving Operator Involvement with Wastewater Designs <i>Lance Salerno Brown and Caldwell</i>	Collaborative Strategies for Addressing Emerging Regulatory Requirements <i>Debbie Webster Central Valley Clean Water Association</i>
When Should Start-up Begin? <i>Tom Hendrey West Yost Associates</i>	Whole Effluent Toxicity: How New Regulations Will Impact NPDES Permits <i>Paul Bedore Robertson-Bryan</i>
Maintenance Lessons Learned from 66 MGD Bypass of Influent Structure <i>Sanjay Reddy Carollo Engineers</i>	Integrated Stormwater/ Wastewater Planning: Adaptive, Long-Term Investment Strategies Based on Community Priorities <i>Trent Stober, HDR</i>

- CODES FOR PRACTICE AREAS**
- CS COLLECTION SYSTEMS
 - EI ELECTRICAL & INSTRUMENTATION
 - ER ENGINEERING & RESEARCH
 - LB LABORATORY
 - OM OPERATIONS & MAINTENANCE
 - ALL CROSS DISCIPLINE

Schedule and speakers subject to change. Final schedule will be available in late September.

TECHNICAL PROGRAM

WEDNESDAY AM OCTOBER 21

8:00 - 9:00 a.m	LOCAL SECTION ROUNDTABLES		
TRACK NAME	Workforce Development	Co-Digestion	Collection Systems 101
MODERATOR	Helen Hu, Sacramento Regional County Sanitation District	Sarah Deslauriers Carollo Engineers	Jennifer Rojas Long Beach Water Department
PRACTICE AREAS	ALL	ER	CS
SPONSOR			
9:30 - 11:30 a.m.	Leveraging Agency Research to Engage College Students <i>Ruth Spierling Cal Poly State University</i>	Overview of SB 1383 Regulations <i>Sarah Deslauriers Carollo Engineers</i>	Easements 101 <i>Travis Fisher Ojai Valley Sanitary District</i>
	Developing the Leaders Around You: Building Depth for Succession Planning <i>Keith Sorsdal Vallejo Flood & Wastewater District</i>	Statewide POTW Co-Digestion Capacity <i>Elizabeth Charbonnet Carollo Engineers</i>	
	On Boarding New Maintenance Staff <i>Sergio Ramirez West Bay Sanitary District</i>	Food Waste Co-digestion Project Regulatory Challenges and Benefits <i>Ganesh Rajagopalan Kennedy Jenks Consultants</i>	Eliminating Inflow and Infiltration in the Collection System <i>Travis Fisher Ojai Valley Sanitary District</i>
	On Boarding: The Real World Experience of Implementing Agency-wide Onboarding Program <i>Shelly Cortez Sacramento Area Sewer District</i>		

LOCAL SECTION ROUNDTABLES		
Pipeline Rehabilitation	Advanced Water Treatment	PFAS Summit
Adam Brown West Yost Associates	Andrew Salveson Carollo Engineers	Stephen Jepsen SCAP
OM CS ER	OM ER	ALL
Rehabilitating Aging Collection Systems While Minimizing Related Impacts <i>Mark Carey MC Engineering</i>	Advanced Technologies In-Depth (training for advanced water treatment operators and engineers) <i>Andrew Salveson Carollo Engineers</i>	PFAS: What It is, What It Comes From, Where It's Found and Its Dangers <i>Arlene Blum Green Science Policy Institute UC Berkeley</i>
Lessons Learned Rehabilitating a 105” Sewer Interceptor <i>Kingsley Kuang East Bay Municipal Utility District</i>		Status of Regulations <i>Jared Voskuhl CASA</i>
		PFAS Panel Discussion <i>Stephen Jepsen SCAP</i>

Schedule and speakers subject to change. Final schedule will be available in late September.



Speakers and moderators of live sessions will be available through the chat and question & answer features during their session. After the session stick around for **Meet the Presenters** to video chat with the speakers. Registered attendees will have access to all sessions on-demand. Recordings of live sessions will be posted 72+ hours after the original session time. These can be accessed for up to 90 days after the conference, depending on your registration type.

The full session must be attended to receive contact hour(s).



TECHNICAL PROGRAM

WEDNESDAY PM OCTOBER 21

11:30 - 1:30 p.m.	VIRTUAL EXPO: LIVE CHAT		
12:00 - 1:15 p.m.	ENGINEERING & RESEARCH LUNCH: OPERATION & MANAGEMENT PRACTICES AT CENTRAL SAN		
TRACK NAME	Condition Assessments	Crisis Management	Pumping Physics 101
MODERATOR	Lani Good Black & Veatch	Colin Bailey GCR	Dennis Lambert SFBS
PRACTICE AREAS	<div>CSEROM</div>	<div>ALL</div>	<div>CSOM</div>
SPONSOR	<div>LEE+RO WATER INFRASTRUCTURE ENGINEERS</div>		<div>LEE+RO WATER INFRASTRUCTURE ENGINEERS</div>
1:30 - 3:30 p.m.	Going Beyond Just Looks: an Integrated Approach to Condition Assessment <i>David Baranowski</i> <i>South Orange County Wastewater Authority</i>	Outreach: Handling Media Requests During a Crisis <i>Rebecca Schmidt</i> <i>UC Davis Health System</i>	NPSHA vs. NPSHR and Effect on Pump Operation <i>Ronald Aceto</i> <i>Cornell Pump Company</i>
		Disaster Mitigation and Recovery <i>Colin Bailey</i> <i>GCR</i>	
	CMMS Success: Post Collection System Assessment <i>Nahum Padilla Valenzuela</i> <i>Coachella Valley Water District</i>	Lessons Learned from the Camp Fire <i>Michael Lindquist</i> <i>University of California at Davis</i>	Pumping Systems: Energy Efficiency vs. Operating Efficiency <i>Ronald Aceto</i> <i>Cornell Pump Company</i>




Schedule and speakers subject to change. Final schedule will be available in late September.

Speakers and moderators of live sessions will be available through the chat and question & answer features during their session. After the session stick around for **Meet the Presenters** to video chat with the speakers. Registered attendees will have access to all sessions on-demand. Recordings of live sessions will be posted 72+ hours after the original session time. These can be accessed for up to 90 days after the conference, depending on your registration type.

The full session must be attended to receive contact hour(s).

VIRTUAL EXPO: LIVE CHAT		
ENGINEERING & RESEARCH LUNCH: OPERATION & MANAGEMENT PRACTICES AT CENTRAL SAN		
Regulatory & Optimization Challenges with Digester Gas Systems	Advanced Water Treatment	PFAS Summit
Charles Ro Lee & Ro	Andrew Salveson Carollo Engineers	Stephen Jepsen SCAP
<div>ALL</div>	<div>OMER</div>	<div>ALL</div>
Balancing Regulatory Deadlines with Uncertain Biogas Generation <i>Derya Dursun</i> <i>Hazen and Sawyer</i>	Advanced Technologies In-Depth (training for advanced water treatment operators and engineers) <i>Andrew Salveson</i> <i>Carollo Engineers</i>	PFAS Treatment Technologies <i>Jenny Reina</i> <i>Jacobs</i>
LCFS Credits for WRRF Co-Digestion Products <i>Eva Agus</i> <i>East Bay Municipal Utility District</i>		PFAS in Biosolids <i>Kathryn Gies</i> <i>West Yost Associates</i>
Innovative Tool Helps with Decisions on Biogas Utilization for City of Riverside <i>Christian Tasser</i> <i>Carollo Engineers</i>		PFAS and the Lab <i>Agustin Pierri</i> <i>Weck Laboratories</i>
Overcoming Mixed Signals for Digester Gas Utilization <i>Victoria Evans</i> <i>HDR</i>		PFAS Panel Discussion <i>Stephen Jepsen</i> <i>SCAP</i>

TECHNICAL PROGRAM
THURSDAY MORNING OCTOBER 22

8:00 - 9:00 a.m.	COMMITTEE ROUNDTABLES	
TRACK NAME	Co-Digestion O&M	Regional San Summit: The EchoWater Project
MODERATOR	David Bachtel Bachtel Wastewater Engineers	Mike Falk HDR
PRACTICE AREAS		
SPONSOR		
9:30 - 11:30 a.m.	Co-digestion of Organics from Mixed Solid Waste (MSW) <i>Yaniv Scherson Anaergia</i>	Program Introduction, Program Implementation and Where We Are Now <i>Dan Wilson Sacramento Regional County Sanitation District</i>
	Assessing Impact of Food Waste Addition to Liquids Treatment <i>Zakir Hirani Stantec</i>	Benefits of the Pilot Program <i>Seppi Henneman Brown and Caldwell</i>
	Evaluation of Feedstocks for Co-Digestion at POTWs <i>Colin Moy East Bay Municipal Utility District</i>	Reliability Centered Design/Maintenance <i>Kenneth Abraham HDR</i>
	Lessons Learned: Pilot Food Waste Co-Digestion at Goleta SD <i>James Dunbar Lystek International</i>	Asset Management: Data Collection and Transfer <i>Amanda Morrow Brown and Caldwell</i>
	Breaking Down the Co-digestion Question: Lessons Learned at Encina <i>Scott Goldman, Woodard & Curran</i>	
11:30 - 1:30 p.m.	VIRTUAL EXPO: LIVE CHAT	

Schedule and speakers subject to change. Final schedule will be available in late September.

Speakers and moderators of live sessions will be available through the chat and question & answer features during their session. After the session stick around for Meet the Presenters to video chat with the speakers. Registered attendees will have access to all sessions on-demand. Recordings of live sessions will be posted 72+ hours after the original session time. These can be accessed for up to 90 days after the conference, depending on your registration type.

The full session must be attended to receive contact hour(s).

COMMITTEE ROUNDTABLES		
Collection Systems for Supervisors/Managers	Using Big Data to Improve Process Operations	Laboratory
TBD	Howard Brewen Jacobs	Amber Baylor SOCWA
CS	OM ER	LB
Collection Systems Compliance: Best Practices and Case Studies James Fischer Fischer Compliance	Smart Digital Solutions Haley Lehman Water Systems Consulting	Maintaining a Safe Working Environment in an Environmental Production Lab Aaron Nelsen Caltest Analytical Laboratory
	Artificial Intelligence for Cost Optimization of Treatment Processes Richard Loeffler Xylem Digital Solutions	Quality Assurance for the Most Frequently Analyzed Methods at POTW Labs Amber Baylor South Orange County Wastewater Authority
	Process Controls to Meet Stringent Effluent Limits and Improve Operational Sustainability Victoria Boschmans Hazen and Sawyer	Working Smart: Using a LIMS to Achieve Your California Regulatory Requirements Richard Danielson Accelerated Technology Laboratories
	VIRTUAL EXPO: LIVE CHAT	

“GETTING DIFFERENT PERSPECTIVES ON THINGS FROM PEOPLE AND PRESENTATIONS WAS GREAT. I CAN USE THOSE TOOLS TO IMPROVE.”

-AC19 ATTENDEE

TECHNICAL PROGRAM
THURSDAY AFTERNOON OCTOBER 22

11:45 a.m. - 1:15 p.m.	CAREER PATHWAYS IN WATER/WASTEWATER LUNCH	
TRACK NAME	Collection Systems for Front Line	Regional San Summit: The EchoWater Project
MODERATOR	Steve Cano Costa Mesa Sanitary District	Mike Falk HDR
PRACTICE AREAS	OM ER	ALL
1:30 - 3:30 p.m.	Combination Machine Maintenance & Daily Maintenance Carey Olcott Haaker Equipment	Innovation: Sidestream Treatment William Yu Sacramento Regional County Sanitation District
		Challenges with Commissioning Large Treatment Processes Leslie Knapp Brown and Caldwell
	Flow Pressure for Nozzles Carey Olcott Haaker Equipment	3D/4D/5D: Planning and Design Christina Romano Brown and Caldwell
		3D/4D/5D: Construction Ron Perkins HDR

Schedule and speakers subject to change. Final schedule will be available in late September.

Speakers and moderators of live sessions will be available through the chat and question & answer features during their session. After the session stick around for Meet the Presenters to video chat with the speakers. Registered attendees will have access to all sessions on-demand. Recordings of live sessions will be posted 72+ hours after the original session time. These can be accessed for up to 90 days after the conference, depending on your registration type. The full session must be attended to receive contact hour(s).

Schedule and speakers subject to change. Final schedule will be available in late September.

CAREER PATHWAYS IN WATER/WASTEWATER LUNCH		
Operations 201: Complex P&ID Drawings with Control Narratives	ELAP & TNI	Collection Systems
Chathura Abeyrathna Central San	Josie Tellers City of Davis	Lani Good Black and Veatch
ALL	LB	CS
Operations 201: Complex P&ID Drawings with Control Narratives Linda Leong SFPUC	The State of ELAP Jacob Oaxaca California State Water Resources Control Board	Collection System Regulatory Compliance TBD
	Our Road to TNI Compliance Bruce Medhurst Mammoth Community Water District	

CWEA ANNUAL BUSINESS MEETING AND CLOSING SESSION

THURSDAY, OCTOBER 22 4:00 P.M. - 5:00 P.M.

Don't miss the closing session of CWEA's first virtual conference. We'll discuss the future of the association, how you can become more involved and announce the winners to the SYP Scavenger Hunt!



REGISTRATION INSTRUCTIONS

Before you register one or more persons online, please read all instructions. You will need your online **CWEA** password or the ability to do a group registration for all those you are registering. All conference attendees, including speakers and exhibitors, are required to register.

MEMBER-DISCOUNTED RATES

Only CWEA, WEF, or CA-NV AWWA membership qualifies for member-discounted rate and memberships will be verified. The additional cost of a non-member registration will be applied toward one year of CWEA membership, unless otherwise stated on the registration form. To ensure accuracy, read all instructions prior to filling out the Registration Form and all other necessary forms.

RETIRED MEMBERS

Retired Members are eligible for a special registration rate. CWEA Bylaws state that a retired member is any person retired from and not currently affiliated professionally or technically with the water quality field. Retired members are asked to contact Member Services directly at 510.382.7800 x0 or memberservices@cwea.org.

STUDENT REGISTRATION

Full-time students are eligible for free registration. This registration type is not available online since students must provide verification of current enrollment (nine or more units per semester). Students are asked to contact Member Services directly at 510.382.7800 x0 or memberservices@cwea.org.

EXHIBITORS & SPONSORS

For more information about CWEA Exhibits, please contact CWEA Senior Manager, Exhibitions & Sponsorship Sales, Christine Carchia at ccarchia@cwea.org or 510.746.7415.

REGULATORS AND ACADEMICS REGISTRATION

Full-time employees of academic institutions and full-time employees of federal or state regulatory agencies are eligible for our discounted Regulators and Academics registration fee – please contact Member Services directly at 510.382.7800 x0 or memberservices@cwea.org.

REFUND POLICY

Written cancellation notice is required and must be received at least 30 days prior to the conference date. A 25% service fee shall be retained on all cancellations. No refunds will be given for cancellations made less than 30 days prior to the conference. If you are not able to attend, please consider transferring your registration.

REGISTRATION PAYMENT

Payment can be made by check payable to: CWEA AC20. Credit card payments are also accepted using the enclosed registration form or through CWEA's secure website (AC.CWEA.org).

All fees for conference registration shall be paid in full at the time of registration. Full payment may be made by credit card, personal check or company/agency check. Purchase orders are also accepted. Registrations received without full payment or purchase order will not be processed. You must be registered for the conference as an attendee to receive contact hours.

REGISTRATION QUESTIONS

Contact Member Services at 510.382.7800 x0 or memberservices@cwea.org.



SPEAKER QUESTIONS

Contact Monica Myhill, Director of Education, at mmyhill@cwea.org.

DISCLAIMER

CWEA and its Board members and volunteers are not responsible for the actions of speakers or the content of their sessions. No endorsement is implied or given of any persons or their philosophies, ideas or statements; nor of any products or processes; nor of any organizations or companies who volunteer to serve as speakers at the conference or exhibitors who purchase display space in the Virtual Expo.

Mail registration payment and form to:

CWEA
7677 Oakport St, Suite 600
Oakland, CA 94621-1935

Need assistance?

Contact Member Services
510-382-7800 x0
memberservices@cwea.org

REGISTRATION FORM

Register online: MyCWEA.org

(PLEASE PRINT OR TYPE)

First Name: _____ Last Name: _____

Agency/Company: _____ Title: _____

Address: _____

City: _____ State: _____ Zip: _____

Phone Number: _____ E-Mail: _____

☐ CWEA MEMBER ☐ WEF MEMBER ☐ CA-NV AWWA MEMBER # _____

Check here if you do **not** wish to take advantage of membership: ☐ (Non-member rates include 1 year membership in CWEA.)

Tell us a bit about you. Please select one response for each question.

1. WHAT IS YOUR CAREER STAGE?			2. WHAT IS YOUR PRIMARY PRACTICE AREA?			
<input type="checkbox"/> Student	<input type="checkbox"/> Job Seeker		<input type="checkbox"/> Collection Systems	<input type="checkbox"/> Electrical/Instrumentation		
<input type="checkbox"/> Entry-level	<input type="checkbox"/> Journey-level		<input type="checkbox"/> Engineering	<input type="checkbox"/> Laboratory	<input type="checkbox"/> Plant Maintenance	
<input type="checkbox"/> Supervisor	<input type="checkbox"/> Management		<input type="checkbox"/> Plant Operations	<input type="checkbox"/> Pretreatment	<input type="checkbox"/> Public Outreach	
<input type="checkbox"/> Executive	<input type="checkbox"/> Retiree	<input type="checkbox"/> Other	<input type="checkbox"/> Safety	<input type="checkbox"/> Stormwater	<input type="checkbox"/> Utility Executive	<input type="checkbox"/> Other

3. WHAT TYPE OF ORGANIZATION DO YOU WORK FOR?	
<input type="checkbox"/> Municipal - Large (400K+ customers)	<input type="checkbox"/> Municipal - Medium (50K-400K customers)
<input type="checkbox"/> Municipal - Small (< 50K customers)	<input type="checkbox"/> Non-municipal - Consulting Firm
<input type="checkbox"/> Non-municipal - Manufacturer or sales representative <input type="checkbox"/> Non-municipal - Regulator, State or Federal <input type="checkbox"/> Other	

REGISTRATION

MONDAY, OCTOBER 19 - THURSDAY, OCTOBER 22 2020

		Live Conference	On-Demand Content	Member Price	Non-Member Price
<input type="checkbox"/>	STANDARD 30	FULL ACCESS	30 days access	\$375	\$567
<input type="checkbox"/>	EXTENDED 60	FULL ACCESS	60 days access	\$475	\$667
<input type="checkbox"/>	PREMIUM 90	FULL ACCESS	90 days access	\$525	\$717
<input type="checkbox"/>	Group discounts	6-10 Attendees 10% Discount	11-20 Attendees 15% Discount	21+ Attendees 20% Discount	
<input type="checkbox"/>	Students, retired members, academics and regulator discount	Please call member services 510.382.7800 x0			
Fee Total \$					

PAYMENT INFORMATION

For payments by check or money order, make payable to: **CWEA AC20**.

For payments by credit card, please print clearly.

Credit card: ☐ VISA ☐ MASTERCARD ☐ DISCOVER ☐ AMEX Signature: _____

Credit card number: _____ Expiration date: _____

Name of account holder: _____ Billing zip code: _____